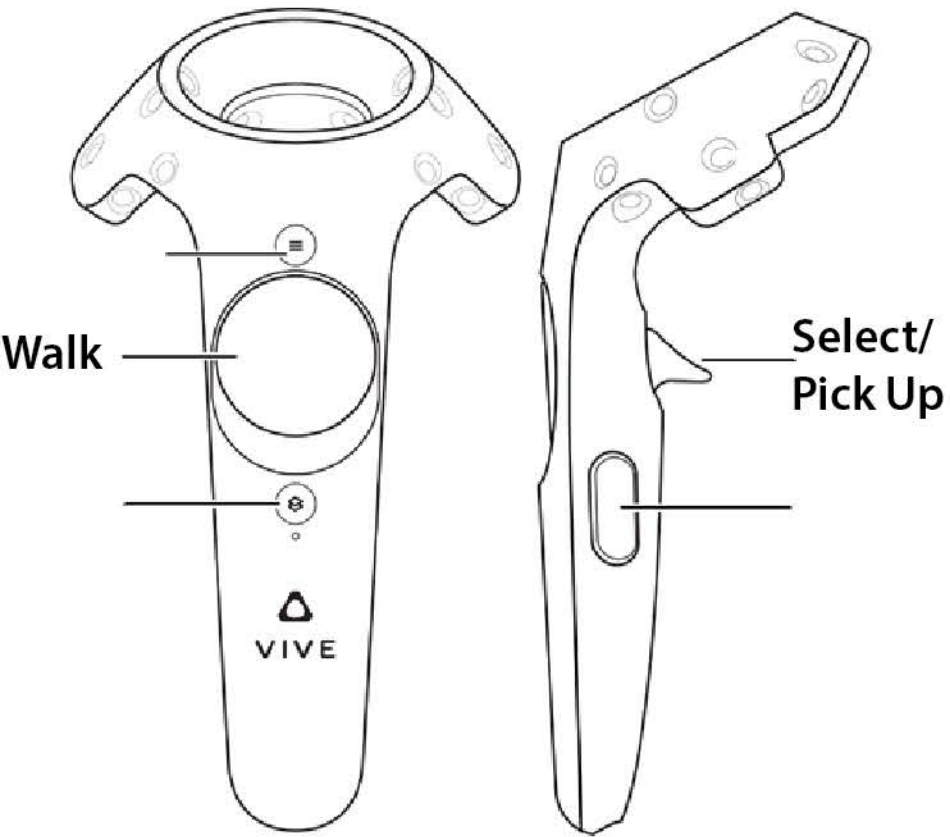
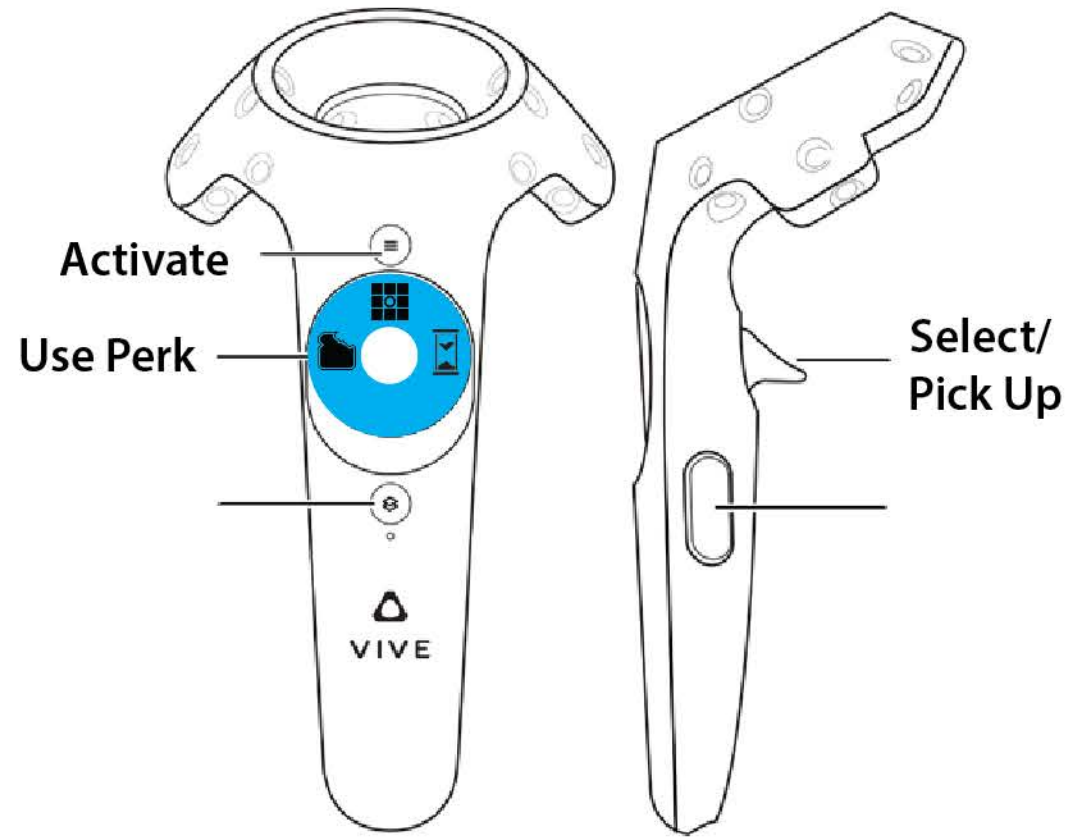


# HTC Vive

## Left Hand

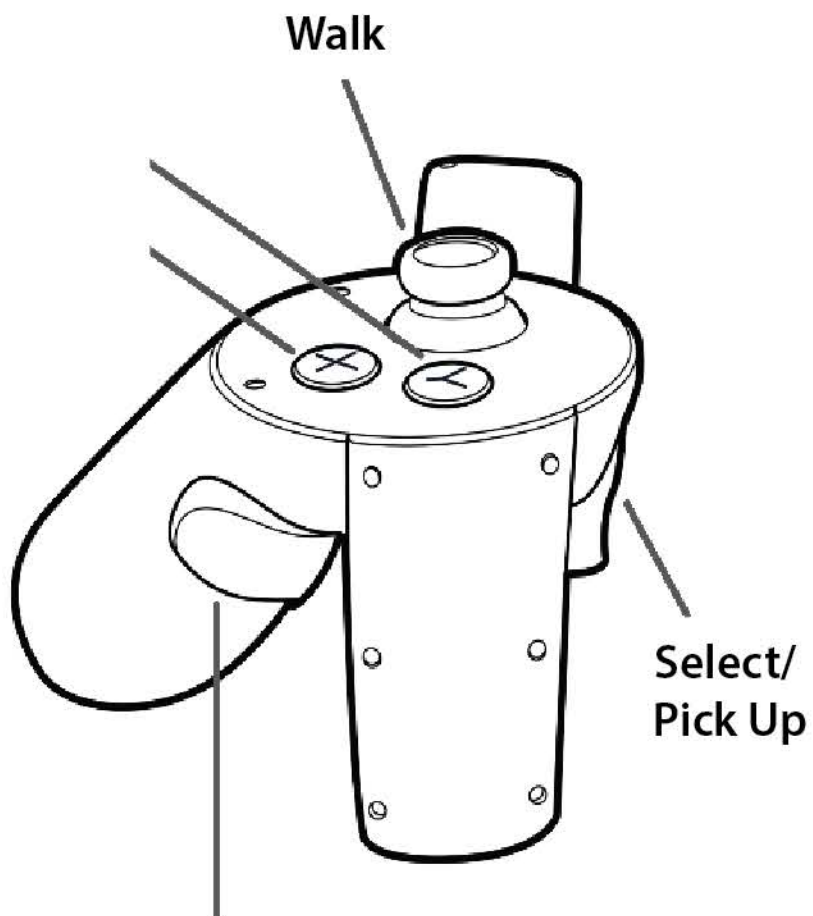


## Right Hand

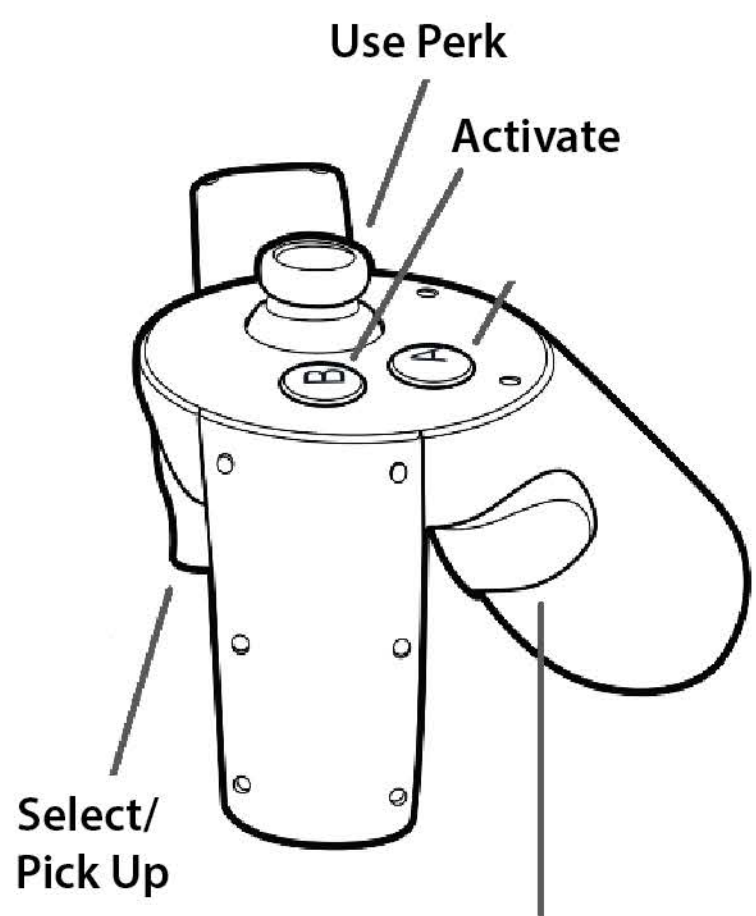


# Oculus Rift

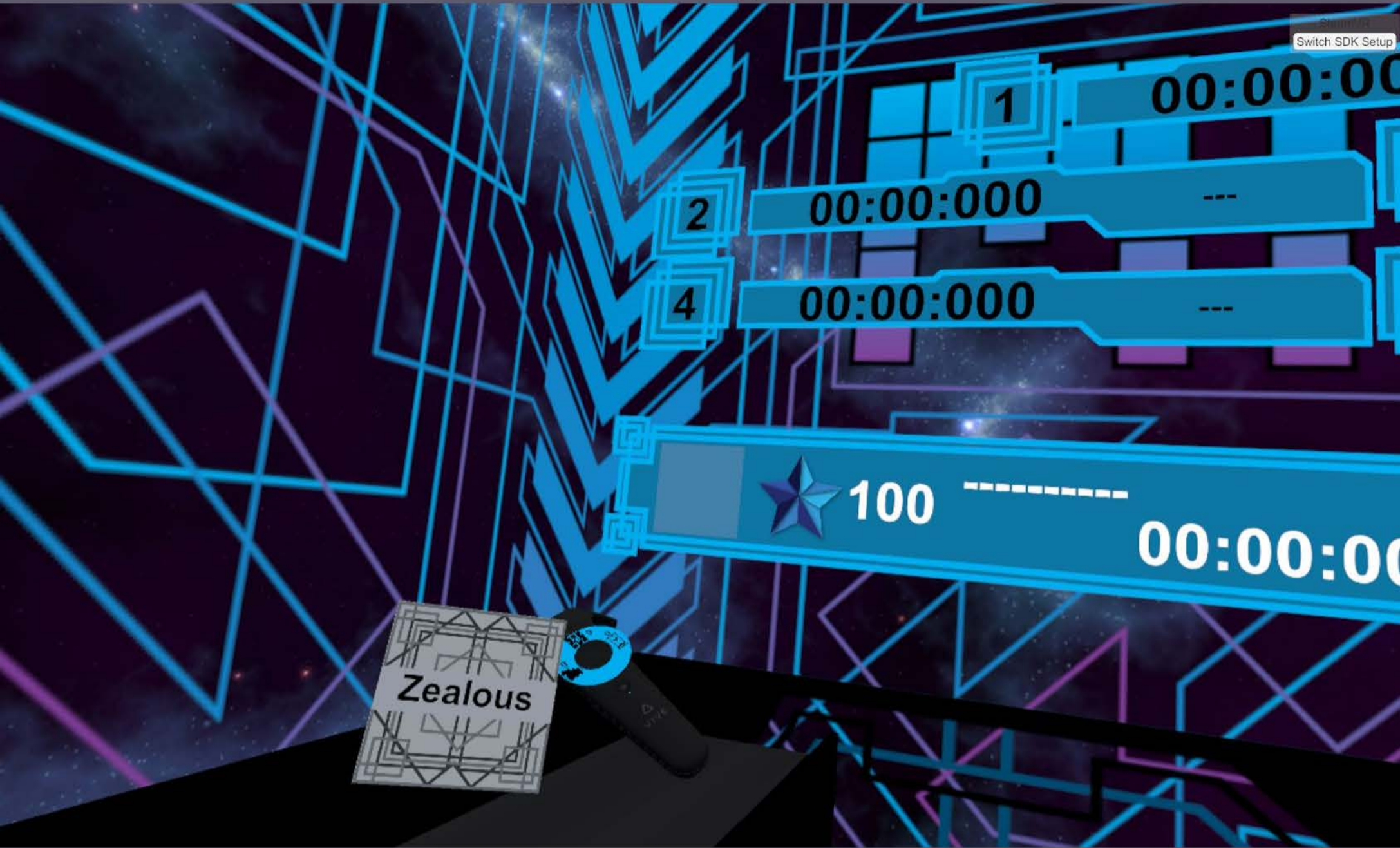
## Left Hand



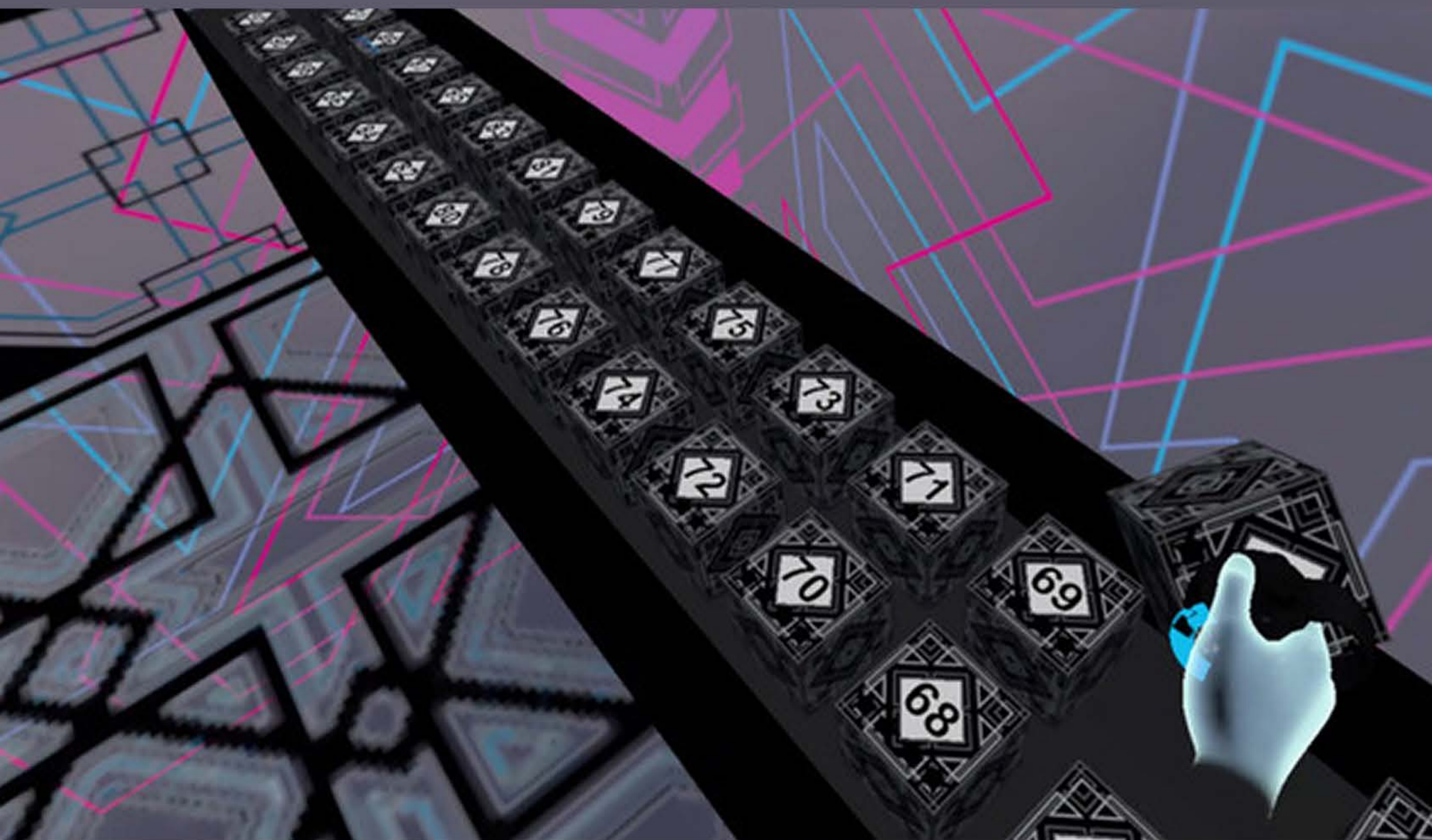
## Right Hand



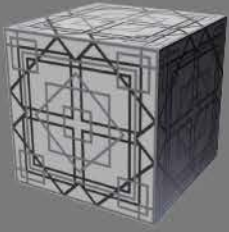
# Throw Player Block



# Throw Level Block



# MIMIC'S BLOCKS



### Player Block

This block represents the player and is thrown into the game area to load that player's levels.



### Level Block

There are 100 levels numbered on top of the block. Throw this block into the game area to load each level. Once you beat the level the block will respawn onto the level block platform. If you run out of reveal time and fail a level the block will not respawn until another level is beaten.



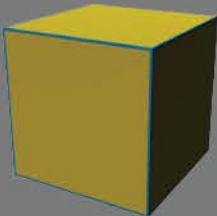
### Bread Crumb Perk

Find and collect this perk throughout the levels and use it to reveal the path as you walk through it. If you fall don't worry your progress on the path will show.



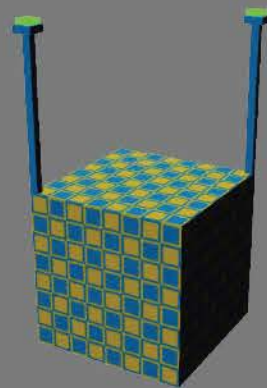
### Hint Perk

Find and collect this perk throughout the levels. This perk reveals the 8 blocks surrounding your location so you know what's safe and what's not. The effected blocks will stay revealed the rest of the level.



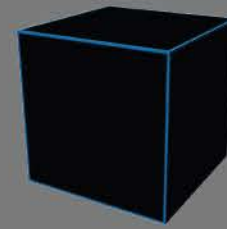
### Start Block

This is the first block of the path for each level.



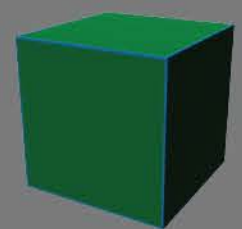
### Finish Block

The level time stops and you win the level when you reach this block and swipe the buzzer with your hand.



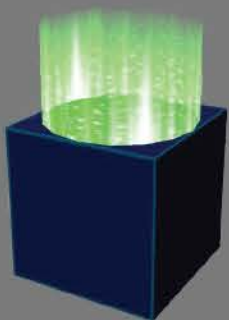
### False Block

This block you will quickly fall for. It looks like every other block but isn't actually there. Try to walk on this block and you will fall to your... Well back to the starting platform.



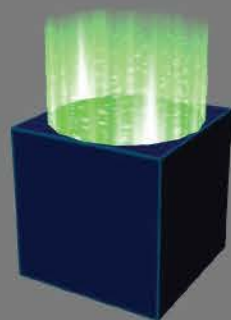
### Solid Block

This is a regular block that can be walked on. Just don't try and activate it or you will be falling before you know what happened.



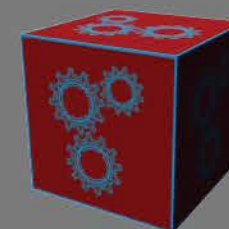
### Teleportation Block

Activate this block to teleport to its destination block.



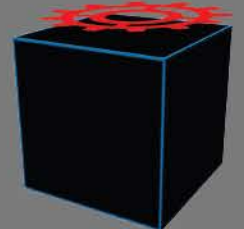
### Teleportation Destination Block

The block shows you where you'll end up when you activate a teleport block.



### Move Block

Just like the name says this block moves you though out the map. Some move blocks need to be activated to move and some move continually all on their own.



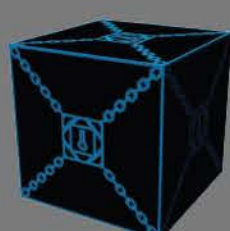
### Move Destination Block

This shows the final location of where the move block is moving to.



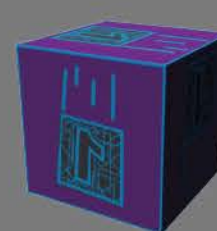
### Key Block

Activate this block to turn the locked blocks from false blocks to solid blocks. Once activated it will reveal the path it unlocked for a short time.



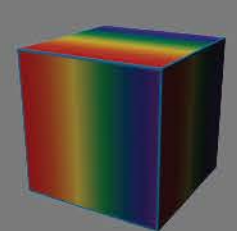
### Lock Block

This block is a false block that needs a key activation to turn solid.



### Fall Block

This is a one time only solid block. After stepping off this block it falls into the obis where it can't help you to finish the level.



### Reveal Block

Activate this block to reveal the path as if you were standing on the starting platform. This will use up your reveal time and stops working once you step off the block.