

TM

MEGARACE



# MEGARACE

CONTESTANTS HANDBOOK	PAGE 2
MANUEL DU CANDIDAT	PAGE 13
TEILNEHMER HANDBUCH	PAGE 24
MANUALE PER I PARTECIPANTI	PAGE 36
MANUAL DEL CONCURSANTE	PAGE 48

The story, all names, characters and incidents portrayed in this production are fictitious. No identification with actual persons, places, buildings and products is intended or should be inferred.

Copyright © 1994 The Software Toolworks, Inc. Copyright © 1994 Cryo Interactive Entertainment. All rights reserved. IBM is registered trademark of International Business Machines Corp. All trademarks and registered trademarks are the property of their respective owners.

L'histoire ainsi que les noms, caractères et incidents décrits dans cette production sont fictifs. Toute ressemblance avec des personnes, lieux, édifices ou produits réels est involontaire et purement fortuite.

Copyright © 1994 The Software Toolworks, Inc. Copyright © 1994 Cryo Interactive Entertainment. Tous droits réservés. IBM est une marque déposée d'International Business Machines Corp. Tous noms de marques et marques déposées sont la propriété de leurs propriétaires respectifs.

Die Geschichte, alle Namen, Personen und Vorkommnisse in dieser Produktion sind erfunden. Es soll keine Verbindung mit wirklichen Personen, Orten, Gebäuden oder Produkten beabsichtigt oder vorgegeben werden.

Copyright © 1994 The Software Toolworks, Inc. Copyright © 1994 Cryo Interactive Entertainment. Alle Rechte vorbehalten. IBM ist das gesetzlich geschützte Warenzeichen von International Business Machines Corp. Alle Handelsmarken und gesetzlich geschützten Warenzeichen sind das Eigentum der jeweiligen Besitzer.

La storia, i nomi, i personaggi e gli eventi narrati in questa produzione sono fittizi. Qualsiasi riferimento a persone, luoghi, edifici e prodotti reali è puramente casuale e non è dettato da intenzionalità alcuna.

Copyright © 1994 The Software Toolworks, Inc. Copyright © 1994 Cryo Interactive Entertainment. Tutti i diritti riservati. IBM è un marchio registrato della International Business Machines Corp. Tutti i marchi e i marchi registrati sono proprietà dei rispettivi titolari.

La trama y todos los nombres, personajes y episodios que aparecen en esta producción son ficticios. No se pretende identificar el contenido de este programa con personas, lugares, edificios o productos reales.

Copyright © 1994 The Software Toolworks, Inc. Copyright © 1994 Cryo Interactive Entertainment. Reservados todos los derechos. IBM es una marca registrada de International Business Machines Corp. Todas las marcas comerciales y registradas son propiedad de sus respectivos titulares.

# MEGARACE

## WELCOME TO VWBT

Hi! I'm Lance Boyle and I want you to imagine a universe where Reality crawls under a rock to switch itself off. Now, I know exactly what you're thinking and in a minute I'll tell you how I know. You're thinking: "This is just one more impossible dream. Oh well, might as well get on with my drab life..." My friend, your impossible dream is about to simulate coming true! It's all thanks to Virtual Television and YOU (yes, YOU) have been targeted to star in the world's top-rated TV show of all time. People stop whatever they're doing just to watch MEGARACE! They can't fight it. And MEGARACE wants YOU!

That's right, VWBT's unlimited resources were programmed to seek out the ideal contestant for MEGARACE, the show where people only think they're trapped in a burning race-car. And what do you know, YOU came closest with an 87% Megability rating! All we had to do was arrange for some brain-cell "burnoff" (and you thought your mom was giving you candy!), so now you're completely ready to MEGARACE! Statistically, your chances of survival are actually slightly ABOVE zero. And anyhow, nobody really buys the farm on MEGARACE. We leave that to Reality, where losers limp away and die!

Okay, so what do you have to do to get ready? Not a thing! Just maintain your regular daily schedule: sort of wake up, watch a host of glittering stars on VWBT, suck strawberry-flavour stuff through a straw and then kind of fall asleep. The day of the show, a team of nice people will come and help you into your special MEGARACE Virtuality Suit. You'll like it a lot! And then, thanks to the magic of television, you'll become the ENFORCER, ready to deal overdue free-way justice to speedpunks specially hired for their disrespectful manner and threatening hairstyles. As the show goes on the air, you'll be part of the virtual universe! You'll choose your car and then burn rubber on the most exotic speedways ever televised! But there won't be time for you to admire the view, Enforcer. We'll leave that to the viewers. You have a job to do: wipe out the local speedgang. That means overtaking those scum one by one 'til you get to the Pack leader! Keep an eye on the Thrill-O-Meter; the public need hot action, all the time. It's non-stop Hell, baby; even the track wants you to fry! If you do

# MEGARACE

win, then we're out of there and the nightmare just starts over someplace else. The track gets deadlier, the gangs get nastier and the camera never goes away! How much heat can you handle, Enforcer?

Of course, I'll be with you every step of the way, talking you through the pain barrier, willing you to look good, whipping you into a frenzy of uncontrolled thirst for justice! The viewers want it. The sponsors demand it. So we'll damn well give it to them, won't we? And when the final bad guy's no more than a grease-stain on the speedway surface, you'll step into the MEGARACE Hall of Everlasting Fame!

Don't worry, the only thing that's real is the wonderful prize you'll win when total victory is finally yours and the streets are safe - until the next time. All the rest is Virtuality, so much better than the real thing! Yes indeed, like I always say: on MEGARACE, the only fatality is Reality.

This is your buddy Lance Boyle signing off. Next time we meet, you'd better be ready to MEGARACE!

A handwritten signature in cursive script that reads "Lance Boyle". The signature is written in black ink and is positioned in the lower-left quadrant of the page.

# **MEGARACE**

## **TABLE OF CONTENTS**

GETTING STARTED	
Installing MegaRace	5
Running MegaRace	5
Game Controls	5
Car Selection	6
Options	7
In-Car Display	8
Symbols	8
Tracks	10
Technical Support	11

# MEGARACE

## INSTALLING MEGARACE

To install MegaRace on your hard drive:

1. Turn on your PC and your CD-ROM drive.
2. Put the disc in your CD-ROM drive (usually D: ) label side up.
3. Type the command that logs to your drive. For example, type D: and press Enter.
4. Type INSTALL and press Enter.
5. Follow the on screen instructions to finish the install.

## RUNNING THE PROGRAM

To run MegaRace from your C: drive:

1. Type CD \MEGARACE and press Enter.
2. Type MEGARACE and press Enter.
3. Follow Lance Boyle's instructions to select a car and a track.

Alternatively you can run MegaRace from your CD-ROM drive:

1. Log on to your CD-ROM drive (usually D:).
2. Type MEGARACE and press Enter.

## GAME CONTROLS

OK, Enforcer, here's your basic driving manual. MegaRace makes it a cinch to keep your eyes on the road.

### Keyboard

To win at MegaRace, use these keyboard controls:

A	Accelerate
Z	Brake
.	Steer right
,	Steer left
Spacebar	Fire weapon
P	Pause/Unpause
Tab	Toggle dashboard between Enemy Display and Zone Warning (If you've picked up the Warning symbol).
Esc	Skip animation
Ctrl-Q	Abort Race

*Hint: Watch out for the command inversor symbol, it will reverse your controls!*



# MEGARACE

## Mouse

Any button	Fire weapon
Drag forward	Accelerate
Drag left	Turn car left
Drag right	Turn car right
Drag back	Brake

## Joystick

Forward left	Accelerator on and left turn
Forward centre	Accelerator on
Forward right	Accelerator on and right turn
Left	Accelerator off and left turn
Centre	Accelerator off
Right	Accelerator off and right turn
Back left	Brake on and left turn
Back centre	Brake on
Back right	Brake on and right turn

*Note: Release of the accelerator gradually slows the car.*

## CAR SELECTION

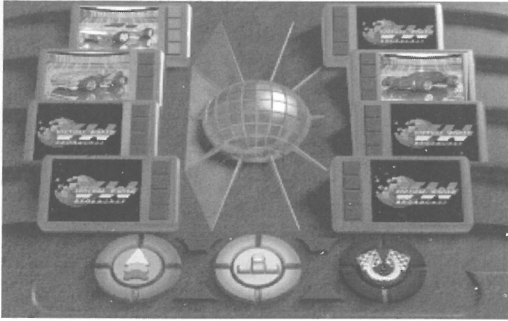
Hold on! You can't just drive any car you want. You've gotta prove yourself on the road, before you get to drive the hot stuff. For starters, you can choose from three cars. But chill out - when you beat each gang leader, you win his car and add that to your selection.

To choose your MegaRace Enforcement Vehicle either move the joystick or press the cursor keys until your required car is highlighted. Pressing the Space Bar will provide you with details of exactly how tough this baby can be!

To climb into your MegaRace Enforcement Vehicle, press Return (for keyboard control), the Joystick fire button (for joystick control) or any Mouse button (for mouse control). Then fasten your seatbelt and watch out! (NB. The way you start the game determines the control method, eg. to play using the mouse press the mouse button here).



# MEGARACE



## OPTIONS

If you are just a little nervous about entering the world of the ENFORCER, you can play around with the option buttons at the foot of the screen.

### Green Button

Allows you to select your level of difficulty - Novice or Hardened. Beware, once you start a show, you can't wimp out and change your level.

### Yellow Button

Load Game - Load in a previous show.

Save Game - Save this show to continue at a later date.

Keyboard - Redefine the keyboard controls.

Joystick - Elect to play the game with joystick. (This option needs to have been enabled in the install routine).

Quit - Leave the show.

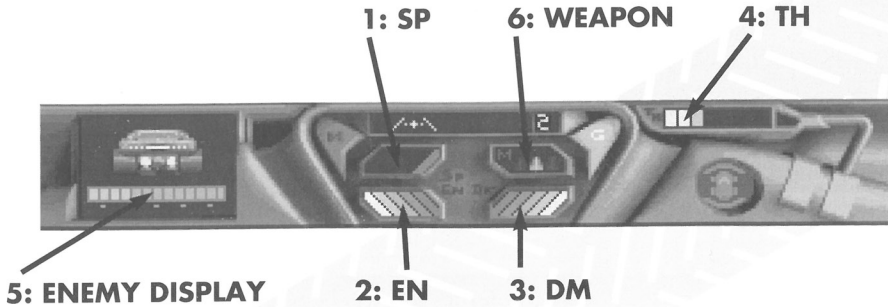
### Blue Button

Hall of Fame - Where previously successful Enforcers leave their mark (Apart from on the track that is!).

# MEGARACE

## IN-CAR DISPLAY



This is how the inside of your MegaRace enforcement vehicle may look. Take note of the following displays:



- 1 : SP - Your speed readout.
- 2 : EN - The amount of energy you have. (Remember - No Energy, No Firing! Note that Missile Launching needs lots of energy).
- 3 : DM - How much damage your MegaRace enforcement vehicle can take.
- 4 : TH - The Thrill-O-Meter.
- 5 : Enemy Display - Have you nearly blown him up yet?
- 6 : Current Weapon - Guns or Missiles.

## SYMBOLS

Each virtual speedway features a whole host of symbols on the track surface, each of which will have an effect on your vehicle - some for better, some for worse. So you'd better keep your eyes on the road if you know what's good for you!

Symbol Label	Description
 Booster +	Get a short burst of high speed.
 Booster -	Brakes applied, which slows or stops car.

# MEGARACE



Points + Gain variable points, depending on track position.



Points - Lose variable points, depending on track position.



Energy + Gain variable amounts of energy.



Energy - Lose variable amounts of energy.



Weapon Upgrade the number of guns, if your car can carry them.



No Weapon Downgrade the number of guns, if your car has them.



Missile Pick up a missile if the car is capable.



Rails Holds the car on the road.



Shield Temporary protection against competitors' cars - if your car has Shield capability.



Radar Jam Jams radar so you cannot see locations of competitor's cars.



Blinding Zone Causes screen wobble so you can not see zones.

# MEGARACE



Command  
Inversor

Your keyboard, mouse, or joystick commands are reversed for a short time.



Panel Off

Fails all panel indicators temporarily.



Skidding

Slippery stuff that makes your car skid.



Skidding turn

Watch it! This'll cause you to go into a 360 spin!



Warning

Enable part of the dashboard that warns of zones on the track ahead.

## TRACKS

MegaRace is staged over five zones, each with its own set of torturous speedways and killer speed gangs. You'll start off in NewSan, but rest assured there's plenty of surprises with each new track.



# MEGARACE

## TECHNICAL SUPPORT

Should you experience any technical problems with this software, such as it failing to operate, please contact the appropriate Technical Services Department:

Technical Services,  
The Software Toolworks, Inc.  
Mindscape International Ltd.  
Priority House, Charles Avenue,  
Maltings Park, Burgess Hill,  
West Sussex, RH15 9PQ  
England, United Kingdom

Telephone: +44 (0)444 239600 (09:30 to 13:00hrs and 14:00 to  
16:30hrs Monday to Friday)

FAX: +44 (0)444 248996

We regret that we cannot offer game hints and tips, as the service is provided for technical difficulties only.

### EPILEPSY WARNING

Please read before using any video game or allowing your children to use it.

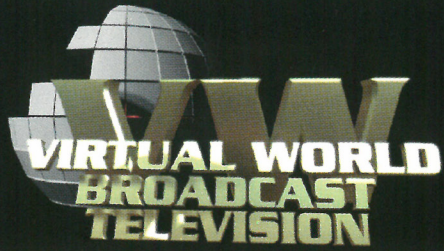
Some people are liable to have an epileptic seizure or loss of consciousness when exposed to flashing lights or certain normal conditions of everyday life. Such persons could risk a seizure while watching televised images or while playing certain video games, and this can occur even if there have been no previous medical problems or experience of epilepsy.

If you or a member of your family has ever shown epileptic symptoms (seizure or loss of consciousness) when exposed to flickering lights, consult your doctor before playing.

Parents should supervise their children's use of video games. If you or your children experience any of the following symptoms — dizziness, altered vision, eye or muscle twitches, loss of consciousness, disorientation, involuntary movements or convulsions — discontinue use immediately and consult your doctor.

### PLEASE TAKE THE FOLLOWING GENERAL PRECAUTIONS WHEN PLAYING VIDEO GAMES

Do not sit too close to the television screen; position yourself with the linking cable at full stretch. Play video games preferably on a small screen. Do not play if you are tired or have not had much sleep. Make sure that the room in which you are playing is well lit. Rest for 10—15 minutes per hour while playing video games.



**V  
W  
B**  
**VIRTUAL WORLD  
BROADCAST  
TELEVISION**



THE SOFTWARE TOOLWORKS

Priority House, Charles Avenue,  
Maltings Park, Burgess Hill,  
West Sussex RH15 9PQ

/MU260113