



## ENDING/CG WALKTHROUGH

1. [JAMES TRUE END](#)
2. [ERIK TRUE END](#)
3. [SAM TRUE END](#)
4. [MATTHEW TRUE END](#)
5. [DAMIEN TRUE END](#)
6. [SUZU TRUE END](#)
7. [NAOMI TRUE END](#)
8. [ANDREW TRUE END](#)
9. [LAW TRUE END](#)
10. [CHAOS TRUE END](#)
11. [DIANA TRUE END](#)
12. [ANGEL BAD END](#)
13. [DIANA BAD END](#)
14. [MALIX BAD END](#)
15. [THE ANGEL'S PASSWORD](#)
16. [MIKA'S EXTRA CGS](#)

## JAMES TRUE END - T



- Sure.
- ...But I did.
- Stay and Clean the House
- James in the Garden
- Ask him a question
- Find One of the Incubi
- Check out the book
- Are you hungry now?
- Keep going
- Steal a kiss
- Barge in and set her straight
- It DOES concern me
- I love him!
- Kiss Him

## ERIK TRUE END - R



- Be cool
- ...So I didn't
- Stay and Clean the House
- Erik in the Dining Room
- Just nod
- Find One of the Incubi
- Please tell me more?
- Kiss Him
- Keep going
- Steal a kiss
- Barge in and set her straight
- It DOES concern me
- I love him!
- Kiss Him

## SAM TRUE END - A



- Ask for an apology
- ...So I didn't
- Stay and Clean the House
- Sam with the front yard
- Join Him
- Find One of the Incubi
- Okay
- Kiss Him
- Keep going
- Steal a kiss
- Barge in and set her straight
- It DOES concern me
- I love him!
- Kiss Him

## MATTHEW TRUE END - N



- I think I'll keep it
- ...So I didn't.
- Stay and Clean the House
- Matthew with cooking
- Nod to him
- Find One of the Incubi
- Join The Hunt
- Kiss Him
- Keep going
- Steal a kiss
- Barge in and set her straight
- It DOES concern me
- I love him!
- Kiss Him

## DAMIEN TRUE END - S



- Be calm
- So then...
- Stay and Clean the House
- Damien with the lobby
- Laugh
- Find One of the Incubi
- Ask again
- Give Him Your Energy
- Keep going
- Steal a kiss
- I Love you.

## SUZU TRUE END - F



- I'll go out with Suzu and Naomi.
- The Arcade
- Go to your room and eat.
- The Arcade
- Let's play a game together!
- Wanna stick around and eat together?
- Chase after her
- Help her
- Go Out With Me



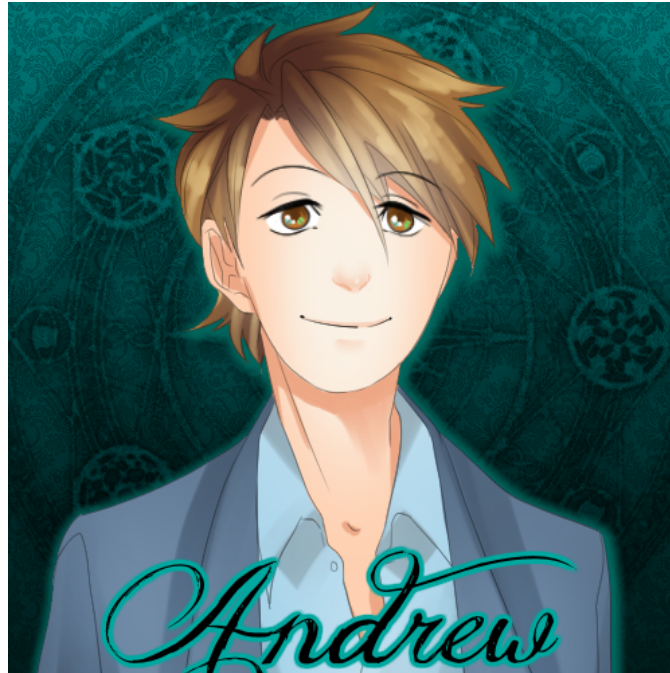
## NAOMI TRUE END - O



- I'll go out with Suzu and Naomi.
- The cafe
- Go to your room and eat.
- The Pink Lady Cafe
- I like it. It has a nice raspberry flavor.
- It's almost like a date.
- Chase after her
- Help her
- Go Out With Me



## ANDREW TRUE END - R



- Go to your room and eat.
- Grandfather's Grave
- You're fine, Andrew
- Thank you.
- Sure! Why not?
- Not at all
- So, how about them Bears...?
- I'll go in, too.
- Speak Up.
- I'd like that.



### **LAW TRUE END - M**

This end unlocks if you let the boys leave and give your memories to Diana. This is a NON-ROMANTIC route ending.

### **CHAOS TRUE END - S**

This end unlocks if you let the boys go and make a deal with Diana for Power. You also need to have completely sided with Suzu during the intro part of the game and fought Lisette/stared into her soul to increase your chaos meter. This is a NON-ROMANTIC route ending.

## DIANA TRUE END - I



- Let the boys go.
- Make a deal with Diana
- Her.
- Yes (To what she ate)
- Yes (To trying the Sweet Flower)
- I'll Stay.
- That's enough, Diana.
- Take her hand.
- You shouldn't have to marry someone you don't love.
- I'm not.
- Run.
- Don't (To her taking your memories)



## ANGEL BAD END - M

Make a deal with Diana and start her route. Stay home from school, but do not follow the romance route after by choosing the other options instead.

## DIANA BAD END - O

Let the boys go and go through the scene after with Diana. Choose "Fight" when you are floating about the pit beast.

## MALIX BAD END - N

Choose "Wait" three times when you are captured by Malix.

## THE ANGEL'S PASSWORD

TRANSFORMSIMON

## MIKA'S EXTRA CGS

This is a guide for the middle row. Eris's CG automatically unlocks for you. Lily's CG unlocks if you go to the Pink Lady Cafe but ask Naomi why she got her drink. Ms. Gordon's CG unlocks if you fight Lisette.